

KITE schuifdeurbeslag

Technische Fiche



DU PONT
HANDEL EN MAATWERK

OVERLAPPING SLIDING SYSTEM

Kite/Aliante





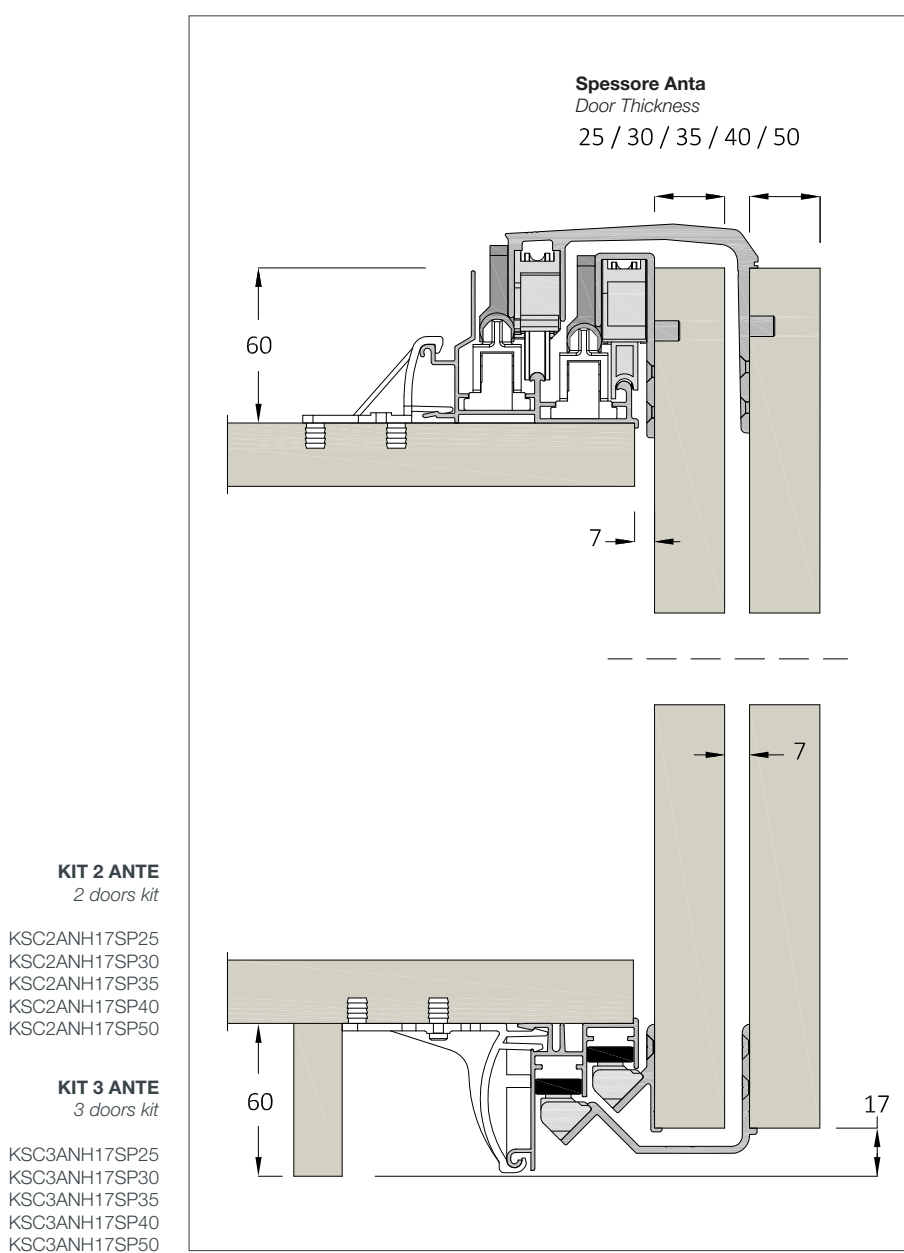
DU PONT
HANDEL EN MAATWERK

KITE schuifdeurbeslag

Technische Fiche

OVERLAPPING SLIDING SYSTEM EQUIPPED WITH MAGNETIC SOFT-CLOSING

Kite h17



Patented pending



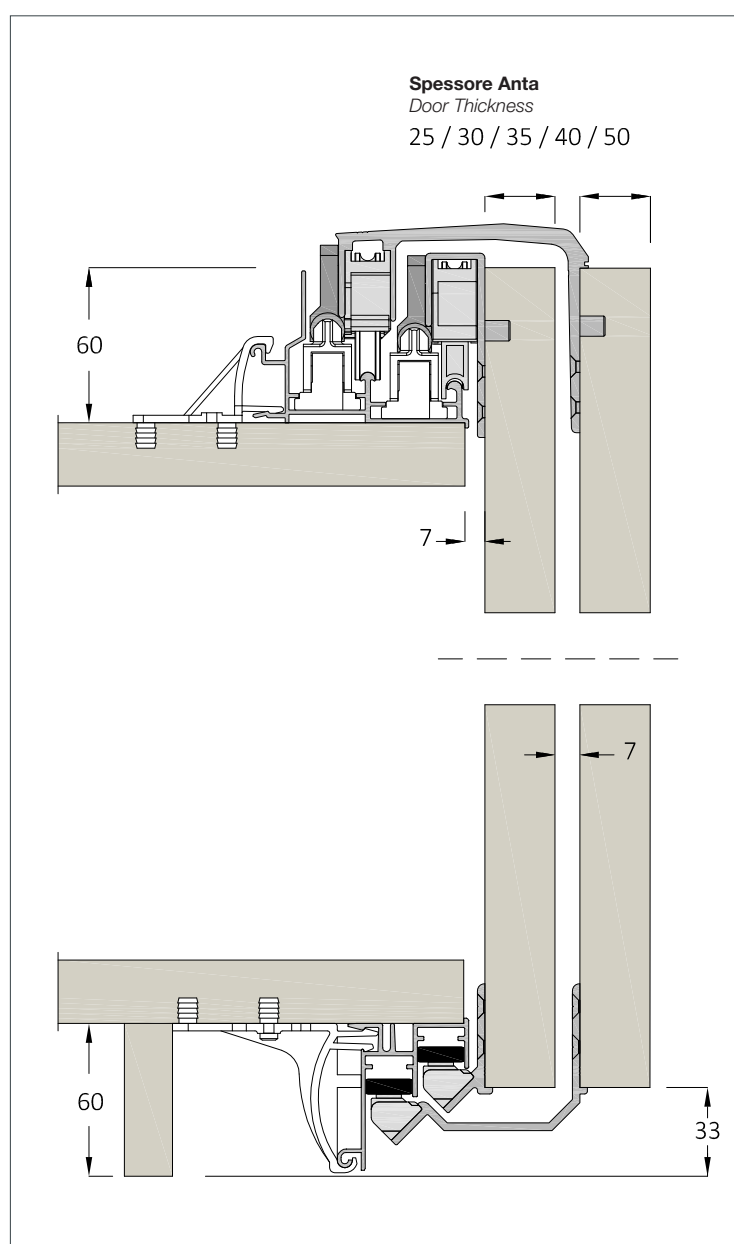
DU PONT
HANDEL EN MAATWERK

KITE schuifdeurbeslag

Technische Fiche

OVERLAPPING SLIDING SYSTEM EQUIPPED WITH MAGNETIC SOFT-CLOSING

Kite h33



Patented pending



DU PONT
HANDEL EN MAATWERK

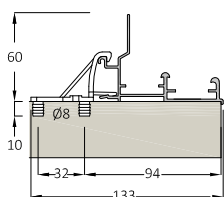
KITE schuifdeurbeslag

Technische Fiche

COMPONENTS

Kite

(*) I Binari possono essere forniti su misura cliente / I Binari possono essere forniti su misura cliente



P9014*

BINARIO SUPERIORE

Finitura Grezza

UPPER RAIL

Raw Finishing

L. 2000 mm - P9014GR2000

L. 3000 mm - P9014GR3000

L. 4000 mm - P9014GR4000

L. 6000 mm - P9014GR6000

BINARIO SUPERIORE

Finitura Anodizzato Naturale

UPPER RAIL

Natural Anodized Finishing

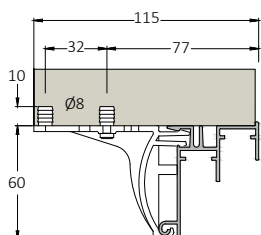
L. 2000 mm - P9014AN2000

L. 3000 mm - P9014AN3000

L. 4000 mm - P9014AN4000

L. 6000 mm - P9014AN6000

Clip E30125



P9053*

BINARIO SUPERIORE rinforzato

Finitura Grezza

Reinforced UPPER RAIL

Raw Finishing

L. 2000 mm - P9053GR2000

L. 3000 mm - P9053GR3000

L. 4000 mm - P9053GR4000

L. 6000 mm - P9053GR6000

BINARIO SUPERIORE rinforzato

Finitura Anodizzato Naturale

Reinforced UPPER RAIL

Natural Anodized Finishing

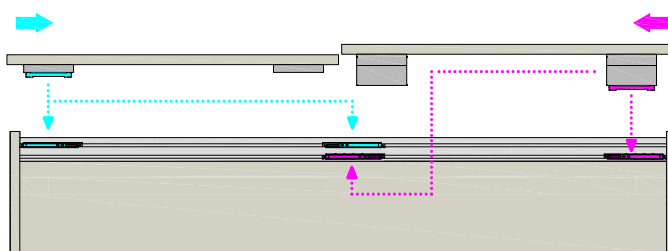
L. 2000 mm - P9053AN2000

L. 3000 mm - P9053AN3000

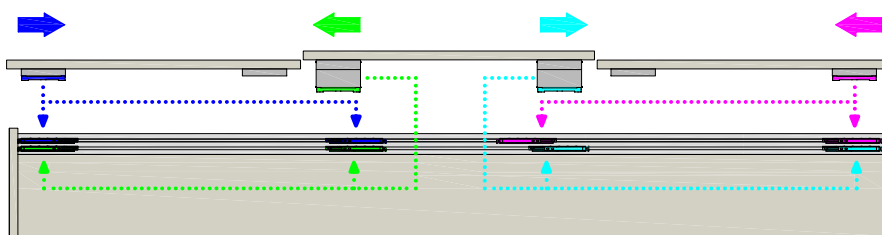
L. 4000 mm - P9053AN4000

L. 6000 mm - P9053AN6000

Clip E30126



Sistema due ante
Two doors system



Sistema tre ante
Three doors system



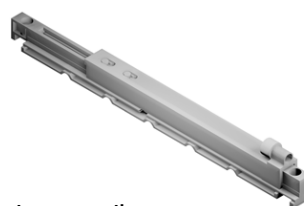
DU PONT
HANDEL EN MAATWERK

KITE schuifdeurbeslag

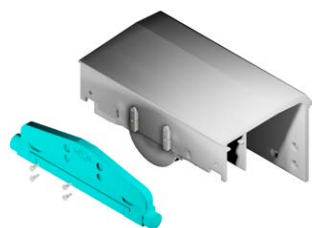
Technische Fiche

COMPONENTS

Kite



Ammortizzatore magnetico
Magnetic Soft Closing
KSCAMMFXXL100



Versione Ammortizzata
Soft Closing Version



Versione Ammortizzata
Soft Closing Version

