



**DU PONT**  
HANDEL EN MAATWERK

# Deurrechter ST741

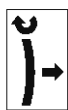
Technische Fiche

## Tipo ST741 Type ST741



DENSITA' LINEARE 620 g/m  
REGOLAZIONE  $\pm 5$  mm  
LUNGHEZZA:  
MIN 1200 mm  
MAX 2800 mm  
LINEAR DENSITY 620 g/m  
ADJUSTMENT  $\pm 5$  mm  
LENGHT:  
MIN 1200 mm  
MAX 2800 mm

8 Nm

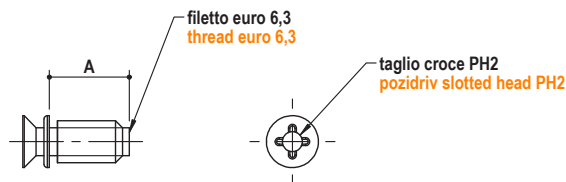
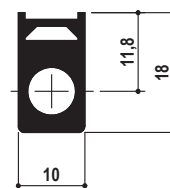
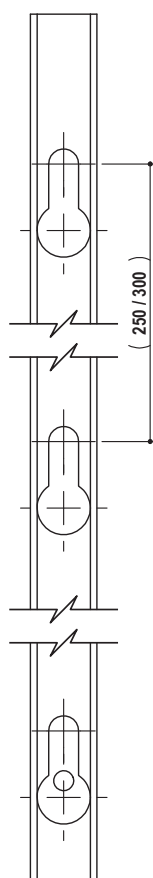


18 N

lunghezza 2550  
length 2550

VITE SPECIALE  
AD INCASTRO  
INTERLOCKING  
SPECIAL SCREW

www.omm.name  
omm@omm.name  
tel. 0362.622377



tipo / type	mis. / meas.	A	finitura / finish	kg / 500pz
P.ST741.	6,3.12.	12	02 zincata / white zinc coat.	1

es: P.ST741.6,3.12.02